

WALL/FIXED PARTITIONS

Steelfire STB80 Glazed Partition system combines robustness and elegance. It has been meticulously designed and certified to maximize glazed areas while minimizing profile view and achieving impressive wall heights. With comprehensive fire performance even in extreme conditions, this system offers endless design possibilities.

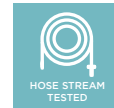


FIRE RESISTIVE
Compartmentalize smoke and flames and block heat transfer

intertek
ASTM E119 & UL 263

Applus⁺

ATTRIBUTES



 **FIRE RATING: 60/90/120 MIN**

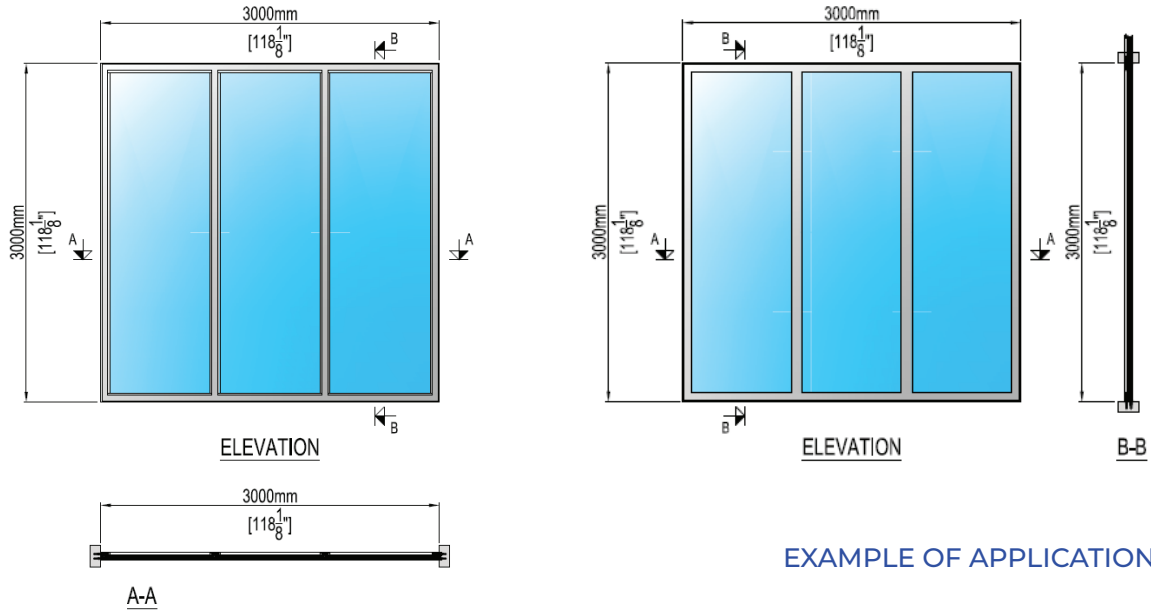
KEY FEATURES

- Fire rating of 60, 90, & 120 minutes with required hose stream test
- Interior and exterior application
- Great acoustic insulation
- Robustly built and resiliently engineered
- Maximized glazing area from floor to ceiling
- Available in multiple configurations
- Compatible with any STB80 door or window system
- Frames can be supplied in either high-performance powder coat finishes or stainless steel with polished or brushed finishes

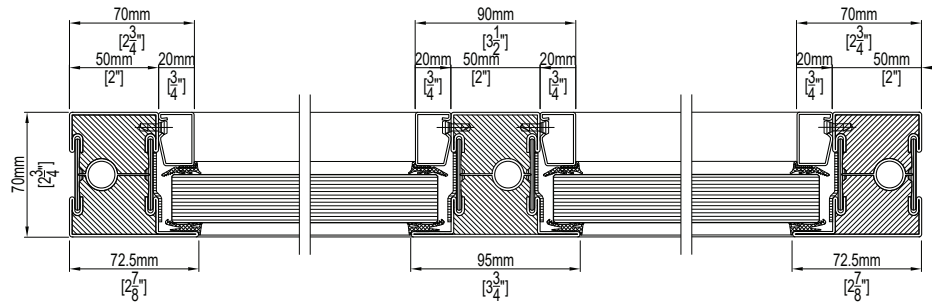
FIRE RATING	MAXIMUM WIDTH	MAXIMUM HEIGHT	FIRE RATED GLASS THK.	MAXIMUM GLASS SIZE	MAXIMUM GLASS AREA
60 mins	Unlimited	3000mm (118-1/8")	27 to 30mm (1-1/16" to 1-3/16")	2890mm W x 2890mm H (113-3/4" W x 113-3/4" H)	4.09m ² (44ft ²)
90 mins	Unlimited	3000mm (118-1/8")	37.5 to 40mm (1-1/2" to 1-5/8")	2890mm W x 2890mm H (113-3/4" W x 113-3/4" H)	4.09m ² (44ft ²)
120 mins	Unlimited	3000mm (118-1/8")	54mm (2-1/8")	2890mm W x 2890mm H (113-3/4" W x 113-3/4" H)	4.09m ² (44ft ²)

Note: Individual Lite sizes cannot exceed the maximum glass sizes shown above. Glasses shown are single glazed. DGU glass thickness varies as it is dependent on the air space and outer pane requirements. Glass pane sizes cannot go beyond the maximum glass area (i.e., glass height can go up to 2890mm (113-3/4" H) but the total glass area cannot be more than 4.09m² (44ft²).

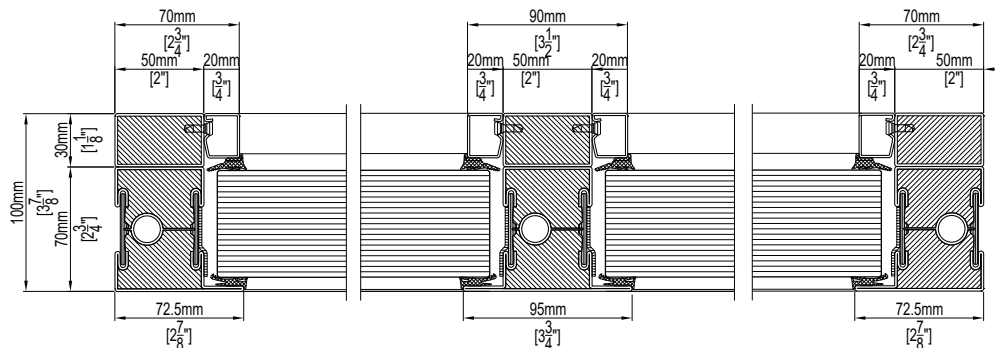
STEELFIRE STB80 60/90/120 MIN
WALL/FIXED PARTITION



EXAMPLE OF APPLICATION



60/90 MINUTES

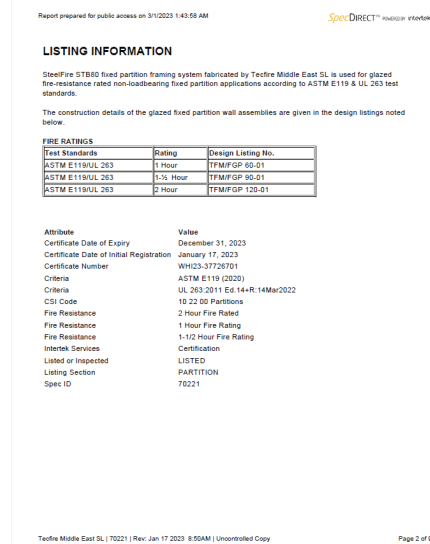
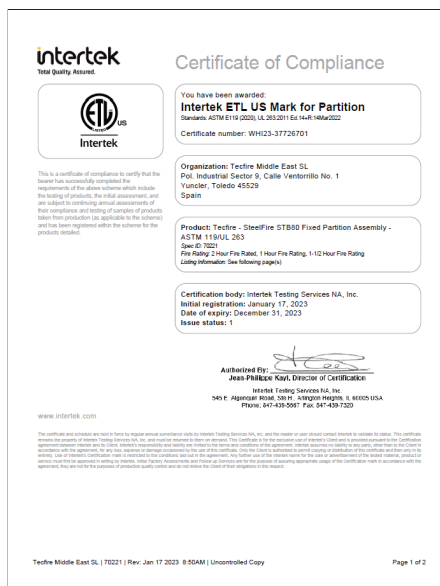


120 MINUTES



Standards: ASTM E119 (2020), UL 263:2011

CERTIFICATE OF COMPLIANCE



LISTING

