



 **FIRE RATING: 45/60/90 MIN**

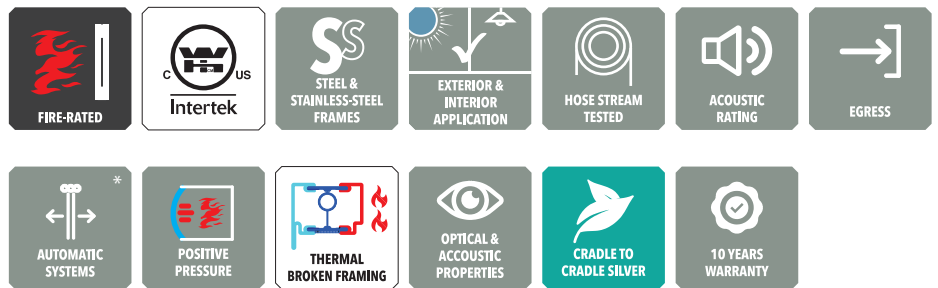
HINGED DOOR

Steelfire STB80 Hinged Door assembly is the new generation and modern alternative to the traditional hinged, with surface mounted door closer door system.



FIRE RESISTIVE
Compartmentalize smoke and flames and block heat transfer

intertek **Applus⁺**
UL 10C, UL 10B, NFPA 252, ANSI 297.1 & CPSC 16 CFR 1201 (Cat. I or II)



*For Automatic hinged door option, please contact us.

KEY FEATURES:

- Narrow steel profiles
- Fire rating of 60 - 90 minutes with required hose stream test
- Thermal break system
- Interior and exterior application
- Door hardware to fit functional requirement (check with Tecfire compatibility)
- Great durability due to its top-to-end cold rolled steel profiles
- Meets the 450°F (250°C) temperature rise criteria of the unexposed side of the door measured at 30 minutes during the fire test
- Frames can be supplied in either high-performance powder coat finishes or stainless steel with polished or brushed finishes
- Design versatility to match the architectural style contributing to its aesthetic appeal

Hinged Door Type	Fire Rating	Maximum Door Width	Maximum Door Height	Fire Rated Glass Thickness	Maximum Glass Size
Single Leaf	60 mins	1340mm (52-3/4")	2508mm (98-3/4")	30 to 34mm (1-1/8" to 1-3/8")	1110mm x 2308mm (43-3/4" x 90-7/8")
Single Leaf	90 mins	1340mm (52-3/4")	2508mm (98-3/4")	40 to 48mm (1-5/8" to 1-7/8")	1075mm x 2300mm (42-3/8" x 90-1/2")
Double Leaf	60 mins	2570mm (101-1/8")	2508mm (98-3/4")	30 to 34mm (1-1/8" to 1-3/8")	1110mm x 2308mm (43-3/4" x 90-7/8")

Note: Individual Lite sizes cannot exceed the maximum glass sizes shown above. Glasses shown are single glazed. DGU glass thickness varies as it is dependent on the air space and outer pane requirements.

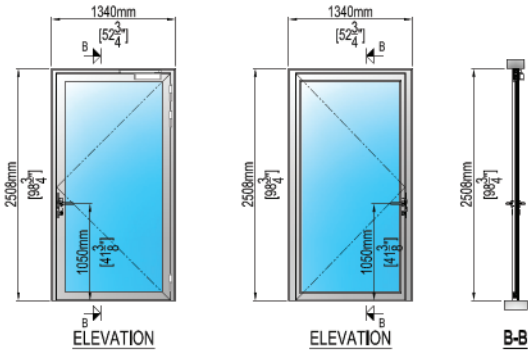


TECFIRE

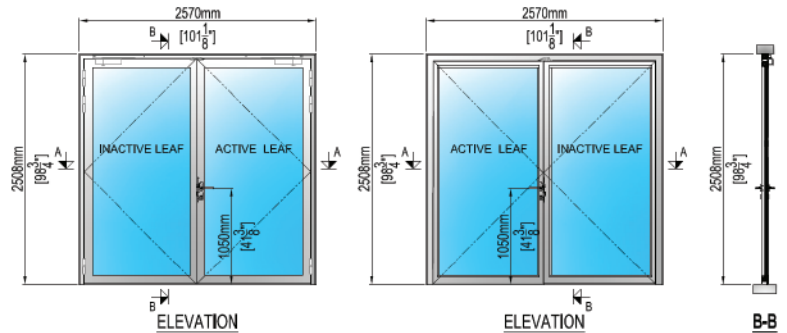
safety is invisible

STEELFIRE **STB80**
STEEL & STAINLESS STEEL SYSTEMS **SERIES**

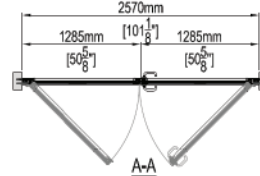
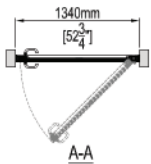
STEELFIRE STB80 60MIN
HINGED DOOR



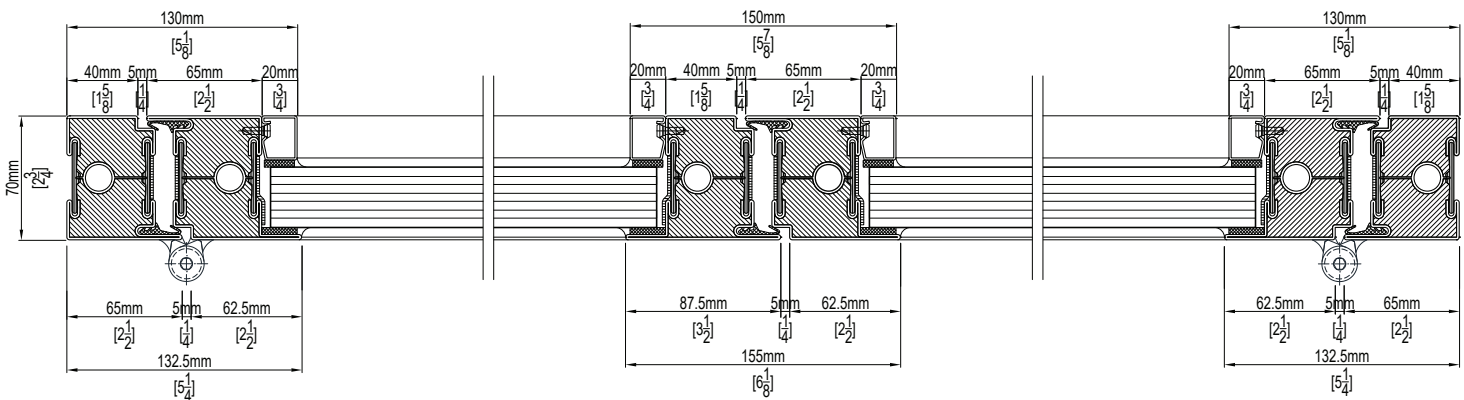
SINGLE LEAF



DOUBLE LEAF



EXAMPLE OF APPLICATION



www.tecfire.com

TECFIRE USA INC.

1-833-TECFIRE



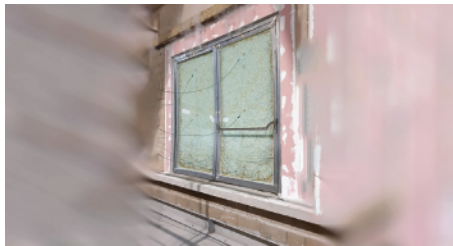
TECFIRE

safety is invisible

STEELFIRE STB80
STEEL & STAINLESS STEEL SYSTEMS SERIES



Petroleum Institute Research Center



FIRE RESISTANCE TEST



HOSE STREAM TEST



Intertek WH US + C Mark for Category D - Door/frame Assemblies
Standards: CAN / ULC S104:2015 (R2020) UL 10(c) (2016), UL 10(b) (R2015), NFPA 252 (2017)

CERTIFICATE OF COMPLIANCE

Certificate of Compliance document for Intertek WH US + C Mark and WH Service Mark 2014 for Category D - Door/frame Assemblies. Includes organization details, product information, and certification body details.

Certificate of Compliance document for Intertek WH US + C Mark and WH Service Mark 2014 for Category D - Door/frame Assemblies. Includes a table for Maximum Double Door Each Leaf Size and Maximum Glass Size.

LISTING

Listing Information document for Tecfire - SteelFire STB80 Door and Frame Assembly - UL 10C. Includes product description and listing information.

Listing Information document for Tecfire - SteelFire STB80 Door and Frame Assembly - UL 10C. Includes a table for Maximum Single Door Leaf Size and Maximum Glass Size.

www.tecfire.com

TECFIRE USA INC.

1-833-TECFIRE

DISCLAIMER: The information provided herein in for general references only and is subject to change without notice. Please visit www.tecfires.com for the most up to date information