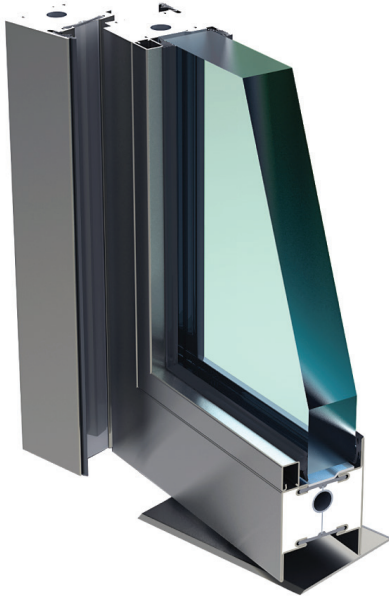


GLAZED SWING PIVOT DOOR

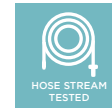
Steelfire STB80 Glazed Swing Pivot Door assembly is the new generation and modern alternative to the traditional hinged system.



FIRE RESISTIVE
Compartmentalize smoke and flames and block heat transfer

intertek **Applus⁺**
UL 10C, UL 10B, NFPA 252, ANSI 297.1
& CPSC 16 CFR 1201 (Cat. I or II)

ATTRIBUTES



*Cradle to cradle is not applicable to the big sizes of 90 mins pivot doors

 **FIRE RATING: 60/90 MIN**

KEY FEATURES

- #1 largest (12 feet tall) glazed fire-rated door system in the industry
- Unrivalled aesthetic look (no visible hinges and surface mounted door closers)
- Narrow steel profiles
- Fire rating of 60 - 90 minutes with required hose stream test
- Thermal break system
- Interior and exterior application
- Single acting swing door
- Door hardware to fit functional requirement (check with Tecfire compatibility) Great durability due to its top-to-end cold rolled steel profiles
- Meets the 450°F (250°C) temperature rise criteria of the unexposed side of the door measured at 30 minutes during the fire test
- Frames can be supplied in either high-performance powder coat finishes or stainless steel with polished or brushed finishes

PIVOT DOOR TYPE	FIRE RATING	MAXIMUM DOOR WIDTH	MAXIMUM DOOR HEIGHT	FIRE RATED GLASS THK.	MAXIMUM GLASS SIZE
Single Leaf	60 mins	1340mm (52-3/4")	2508mm (98-3/4")	30 to 31mm (1-1/8" to 1-3/8")	1110mm x 2308mm (43-3/4" x 90-7/8")
	90 mins	1215mm (47-7/8")	3505mm (138")	48mm (1-7/8")	1070mm x 3342mm (42-1/8" x 131-5/8")
Double Leaf	60 mins	2570mm (101-1/8")	2508mm (98-3/4")	30 to 31mm (1-1/8" to 1-3/8")	1110mm x 2308mm (43-3/4" x 90-7/8")
	90 mins	2500mm (98-3/8")	3505mm (138")	48mm (1-7/8")	1070mm x 3342mm (42-1/8" x 131-5/8")

Note: Individual Lite sizes cannot exceed the maximum glass sizes shown above. Glasses shown are single glazed. DGU glass thickness varies as it is dependent on the air space and outer pane requirements.



TECFIRE

safety is invisible

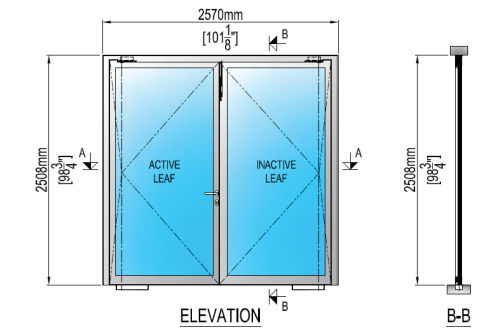
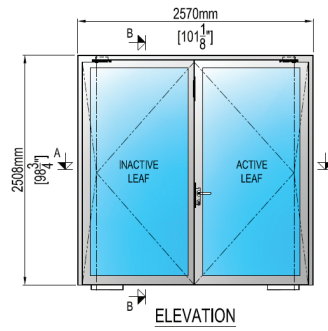
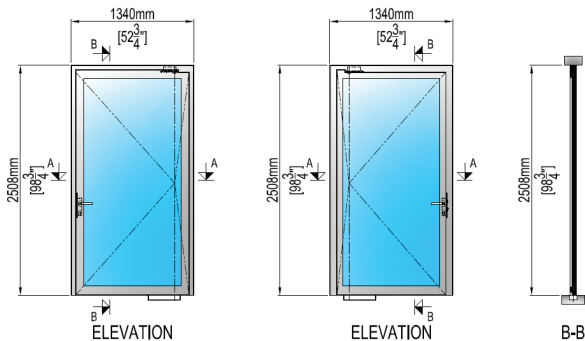
STEELFIRE

STEEL & STAINLESS STEEL SYSTEMS

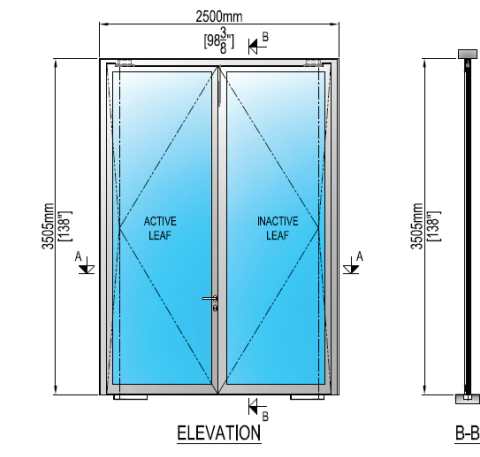
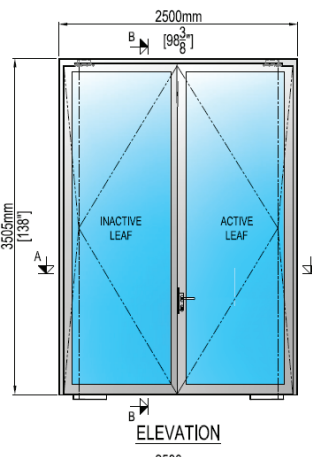
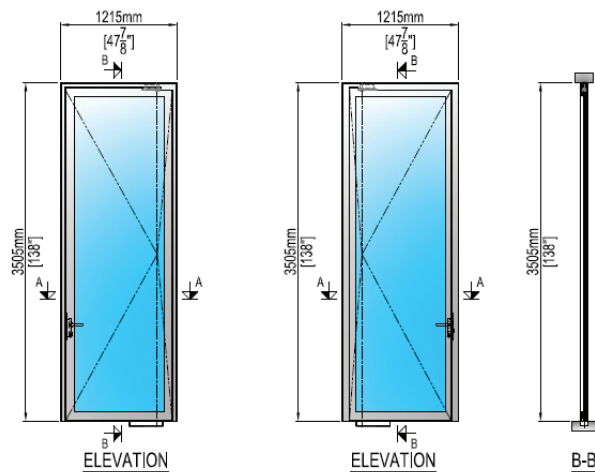
STB80

S E R I E S

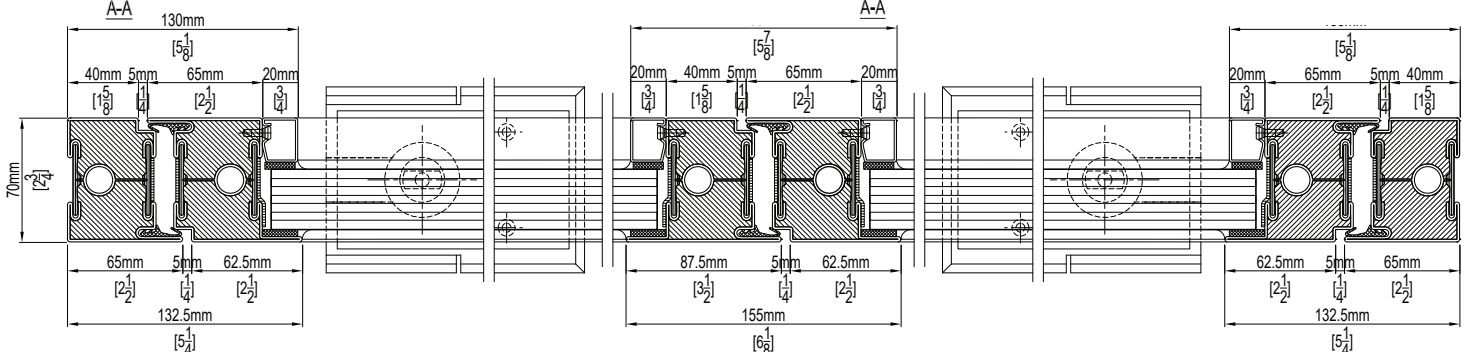
STEELFIRE STB80 60MIN GLAZED SWING PIVOT DOOR



STEELFIRE STB80 90MIN GLAZED SWING PIVOT DOOR



EXAMPLE OF APPLICATION

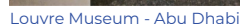


www.tecfire.us

TECFIRE USA INC.

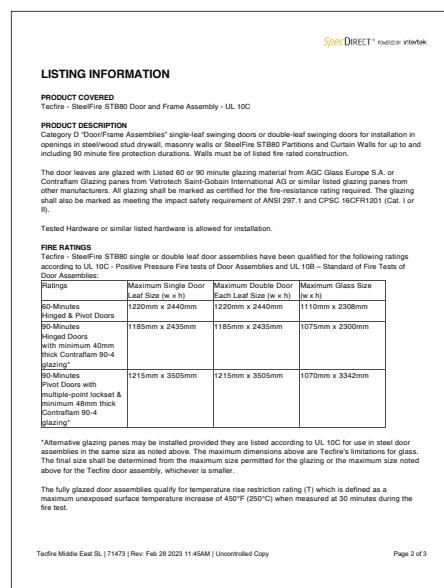
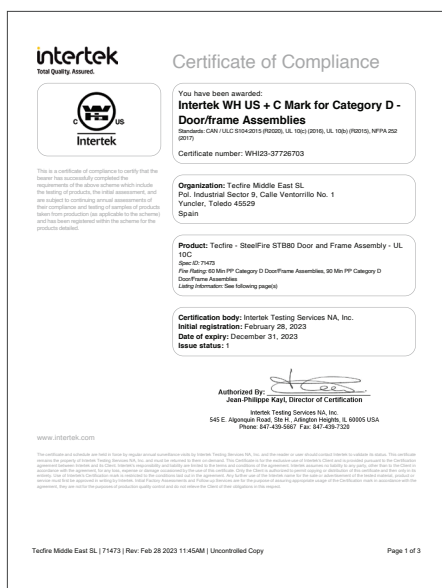
1-833-TECFIRE

DISCLAIMER: The information provided herein is for general references only and is subject to change without notice. Please visit www.tecfires.com for the most up to date information



Intertek WH US + C Mark for Category D -
Door/frame Assemblies
Standards: CAN / ULC S104:2015 (R2020) UL 10(c) (2016),
UL 10(b) (R2015), NFPA 252 (2017)

CERTIFICATE OF COMPLIANCE



LISTING

